



SADDLE BROOK SCHOOL DISTRICT

355 Mayhill Street, Saddle Brook, New Jersey 07663 Phone 201.843.1142 Fax 201.843.0216

Danielle M. Shanley
Superintendent of Schools

VERY IMPORTANT - REMOTE INSTRUCTION for ALL and other Updates

January 29, 2021

Dear Parents and School Community Members:

I hope this letter finds you and your families well. It has been a long month, and we have faced much uncertainty the past few weeks. Our continued increases at the Regional Level and the increases in active positive cases and necessary quarantines have been rising throughout the district. We have active cases in all 5 schools, with more than 80 identified quarantines. With the upcoming long weekend in February, and pending snow storms in our midst, I have garnered the consensus of the members of the Board of Education, and we agree that ***ALL District schools will move to ALL remote, fully virtual status through the long weekend.*** Virtual Days are School Days! Hybrid, in-person instruction will begin again on Tuesday, February 16, 2021.

Hopefully, we will see access to more vaccines during this time period, and will have some consistency across buildings for our families. With this in mind, we still have many people who have been asked to quarantine. Those quarantines have not been lifted until the dates the principals provided. It is imperative that we follow all county guidance and respect quarantine status.

New Cases:

Franklin School has a new Positive Case of COVID-19. The individual was last in the school on Friday, January 22, 2021. ***Anyone who needed to quarantine was already contacted by the building Principal.***

Washington School has a new Positive Case of COVID-19. The individual was last in the school on Thursday, January 28, 2021. ***Anyone who needed to quarantine was already contacted by the building Principal.***



Although we know many parents have asked and would like students to return to school more often, this does not seem to be the best time to do that. Our region has been hit pretty hard lately. The guidance from the state for social distancing (6 feet) has not been lifted. Many of our elementary classrooms are feeling full with 12 students spaced 6 feet apart on any given day. However, due to the greater number of students at the high school working remotely, the classes there are much smaller for in-person instruction. There may come a time when we offer more days for high school students only. We are tracking those numbers closely.

Please take a close look at this [COVID-19 State Profile](#).



FREE Meals are available EVERY SCHOOL DAY - for ALL STUDENTS!

Meals are grab and go style in school OR Parents can pick up at the HS concession stand each school day from 8:30 am to 12 pm.

Feb 12th - pick-up is available from 8:30 am to 12 pm; ON Feb 15th - there will be NO meal service. Meals for Monday will be distributed on Friday.

If you have any questions or concerns about food services, please contact Tom Deptula at foodservices@sbpsnj.org or 201.843.2880 ext 2313.

HYBRID or REMOTE? Choose one.

We have an inordinate amount of students who seem to be moving back and forth between hybrid and remote without prior notification to the principal. If you have a hybrid child assigned to a colored cohort, we expect the child will be present on school days. If your child cannot attend the hybrid in-person days, parents must call the school to report the absence as you normally would. If your child is placed on quarantine by the school district, we will take care of that change for the quarantine period.



Monitoring health of all students is very important - including monitoring virtual students - ALL PARENTS MUST NOW complete "COVID parent form" for student health clearance **every MONDAY** regardless of cohort A, B, A/B or C. CHECK YOUR EMAIL on SUNDAY EVENINGS.

Schedule/Blue/Gold/Virtual Synchronous Days

We will maintain the BLUE/GOLD rotation for as long as required to maintain good health.

	Monday	Tuesday	Wednesday	Thursday	Friday
February	1	2	3	4	5
	8	9	10	11	No School 12
	No School 15	16	17	18	19
	22	23	24	25	26
March	1	2	3	4	5
	8	9	10	11	12
	15	16	17	18	19
	22	23	24	25	26
	29	30	31	1	No School 2
April	No School 5 Spring Break	No School 6 Spring Break	No School 7 Spring Break	No School 8 Spring Break	No School 9 Spring Break

What do these colors mean?

<p>Green = ASYNCHRONOUS ONLINE Learning;</p> <p>ALL STUDENTS WORKING FROM HOME</p>	<p>Blue = LIVE SCHOOL for BLUE Students;</p> <p>Live Synchronous ONLINE Learning for ALL other Students</p>	<p>Gold = LIVE SCHOOL for GOLD Students;</p> <p>Live Synchronous ONLINE Learning for ALL other Students</p>	<p>Blue = LIVE SCHOOL for BLUE Students;</p> <p>Live Synchronous ONLINE Learning for ALL other Students</p>	<p>Gold = LIVE SCHOOL for GOLD Students;</p> <p>Live Synchronous ONLINE Learning for ALL other Students</p>
---	---	---	---	---



Mondays and ALL VIRTUAL DAYS are school days! They should be treated as school days. When Students are dismissed from school each day, they are still expected to attend meets or small groups sessions as directed by their teachers after lunch. Students should not have work schedules, playdates, appointments or plans that begin before the end of the school day.



Please know that the rules for student residency have not changed for the period of virtual instruction. The NJ Laws, BOE Policy and Regulation 5111 are very clear on educating NON-Resident students. Students who attend school in Saddle Brook, must have residency in the Saddle Brook Community with their parents or legal guardians. Should you have any questions or concerns regarding your own residency, or would like to report a non resident student, please contact Mrs. Linda Croce at lcroce@sbpsnj.org or at 201.843.1142 ext, 2304. We do conduct

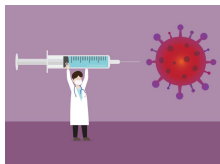
residency investigations throughout the year. You can review BOE Policies [HERE](#).

[COVID-19 State Profile](#) - Please Read!

Worth Repeating:

NJ DOH GUIDANCE on Managing Student and Family Illnesses - [NJDOH COVID 19 Information Hub](#)

1. The most recent guidance from the department of health is very specific for addressing illness during this time: “In the context of an ongoing state-wide second wave, New Jersey continues to experience COVID-19 transmission among school-aged children. In children, signs/symptoms are often mild, and it may not be possible to clinically distinguish COVID-19 from other illnesses. For this reason, the New Jersey Department of Health (NJDOH) recommends that **any child with COVID-19 compatible symptoms should not return to school until they have either received a negative viral test (molecular or antigen) for SARS-CoV-2 or they have completed an isolation period of at least 10 days since symptom onset and at least 24 hours after resolution of fever without fever-reducing medications with symptom improvement. A purely clinical alternative diagnosis is no longer acceptable.** Should you have any questions please contact your school nurse or your family physician.
2. If **anyone in your household** has any COVID related symptoms (fever or chills, cough, shortness of breath or difficulty breathing, fatigue, muscle or body aches, headache, loss of taste or smell, sore throat, congestion or runny nose, nausea or vomiting, and/or diarrhea), **ALL** of the people in your household should quarantine until medical testing clears that individual from having COVID (see red above).
3. Should anyone in your household be awaiting a COVID test result because they have or may have come into contact with a COVID positive person, **ALL MEMBERS OF THE HOUSEHOLD** should REMAIN under quarantine, until that person in your household has a negative test result. Keep in mind the incubation period for showing symptoms can be up to 14 days.
4. If any individual in your household has traveled within the last 14 days, or plans to travel over the long weekend in February, please follow [THIS GUIDANCE](#) from the NJDOH.



COVID VACCINES

If you are interested in getting your COVID Vaccines, find out who is eligible, and pre-register [HERE](#).



Registration for AlphaBEST before and aftercare is open. AlphaBEST will be serving the Saddle Brook School District through June. [REGISTER HERE!](#) Looking for **employment** opportunities with AlphaBEST? Find out more [HERE](#).

Wishing you good health,

A handwritten signature in black ink that reads "Danielle M. Stanley". The signature is written in a cursive style.